



The

# Glass Slipper

*Fitting all glass enthusiasts ...*



## August 2009 Newsletter

A Chapter of the Northwest Region of the International Society of Glass Beadmakers

In this month's newsletter...

*Pg.1*

*President's Comments*

*Pg.2*

*Featured Artist*

*Pg.3 & 4*

*Announcements*

*Pg.5*

*Tool Review*

### A word from the President;

We have some exciting opportunities coming up.

Fire and Rain will have two tables at the Frantz August Bash 09. Members to have a chance to sell their beads. There will be no cost to our members. See details below.

Northwest Bead Society Bead Bazaar. Fire and Rain will have two tables. There is a small fee and you must be a member of Fire and Rain. If you have been thinking about selling beads, both of these events would be a great way to start. Here is a link to the sign up info and form; [www.fire-and-rain.org/NWBeadSocietyBeadBazaar.html](http://www.fire-and-rain.org/NWBeadSocietyBeadBazaar.html)

Nominations will be open for next year's board positions at the August meeting taking place at the Bash. Time; probably during lunch break.

These are all great opportunities, come join the fun!

Hope to see everybody at the Frantz Bash!!

Cheryl

Editors Note;

Bring along a bead for the bead exchange and be ready to tell the process behind it's creation. Don't forget a bead for donation to the Beads of Courage project.

Featured Artist

**Kathy Johnson**



### August Meeting at

Frantz Art Glass Supply  
130 West Corporate Road  
Shelton, WA 98584

1-800-839-6712 or 1-360-426-6712

**August 22, 2009      Time to be determined**

**Mike Frantz's**  
*Bead Exchange*

**Fun & Prizes**

**August Bash**

# Featured Artist - Kathy Johnson;

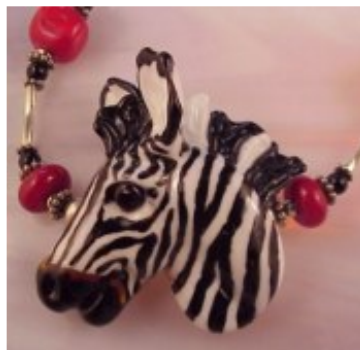
---

Kathy is an artist. She has done a variety of different mediums over the years. (clay sculpture, oil painting, watercolor, and more recently she has started to weld!) She purchased a Stained Glass Studio in 1983 (at the pain of selling her beloved horse, Zurak) and began a glass journey. Around 1990 she saw glass rods at her local suppliers and beads by Sage Holland at the local Bumbershoot Festival and became fascinated with melting glass. In January 1991 Kathy found oxygen, propane and Bruce Townsend who showed her (and a few friends, Andrea Guarino and Richard Prevost) how to wrap glass on a mandrel. (sans: glasses!) So her journey began.

Around that same time the Society of Glass Beadmakers had begun to form. Kathy became involved and has attended all but a few of the Gatherings. She and Mike Frantz co-chaired the famous 1996 Seattle Gathering. She then became a representative for the West Region for a few years and in Miami this year she will be demonstrating her first bead-love "the Aquarium"

Over the years Kathy has demonstrated her beadmaking in Italy, Japan, and also at the ISGB Gathering in Portland. She teaches regularly at her studio and always has small advanced classes ready to be formed! Kathy is most known for her Glass Horsehead beads which are very realistic. Kathy has chosen to make her beads as realistic as she can. Horses were always her first love and a natural choice when she started to sculpt beads in 1994. Now Kathy has begun to take her beads into the realm of sculpture with animal heads of all kinds. Cows, donkeys, llama, dogs and also a series on African Animals like the Zebra, the Giraffe and this year the Elephant. More African animals soon!

You can find her at Glass Expressions  
648 SW 152nd St  
Burien, WA 98166  
(206)242-2860



[thehorselady@gmail.com](mailto:thehorselady@gmail.com)



# Announcements & Blatant Plugs

**Mike Frantz' August Bash 2009** The annual August celebration of glass and glass workers is set for August 22, 2009 at Mike's facility in Shelton WA. There will be give-aways, prizes, auctions, demonstrations, vendors from all over the Pacific Northwest, and Mike's famous 'Bash Sales'. There is even a Free Lunch if you pre-register. **Festivities start about 9:00am**

Pre-register for full benefits. Send an email to [Keith@FrantzArtGlass.com](mailto:Keith@FrantzArtGlass.com) subject 'August Bash sign up' and provide your name and number in your party.

Need a room way out there in the boonies of Shelton? Mike has several rooms reserved at the Little Creek Casino which is totally booked by the way. You will need to call Mike at 800.839.6712 for information on getting one of those rooms.

Free vendor space is still available and Fire and Rain will have a booth.

Frantz Art Glass and Supply  
130 West Corporate Road  
Shelton, WA 98584  
1.800.839.6712 or 1.360.426.6712

**Remember - the Fire and Rain  
Chapter meeting will be after lunch.  
Bring a bead exchange bead  
and Beads of Courage bead**

---

Leslie Thiel's Curved Beads (Soft) (BI) DVD  
By Leslie Thiel ..... \$25.00 Part Number DVD-THIEL1

Leslie demonstrates two beads, from beginning to end. Using an extra long mandrel and ceramic fiber sleeve, Leslie shows you how she shapes a long cylindrical bead with silver leaf burned into its surface. Then she shows you how to curve the bead into shape without bending the mandrel. On the second bead, Leslie adds silver wire tracery before she shows you how to not only curve the bead, but to also how to shape the bead into an overall twisted shape, like a corkscrew. Approximately 25 minutes.

---

## TABLE INFORMATION

Frantz August Bash August 22, 9 AM to 5 PM

Be sure to register at the Frantz website for free lunch, [www.frantznewsletter.com](http://www.frantznewsletter.com).

See Frantz website for more information on great sales, demos, vendor booths and give aways

Fire and Rain meeting time during the lunch break.

Nominations open - members can stop by the Fire and Rain booth anytime and nominate yourself! Nominations close at the October meeting, vote at Holiday party.

Bead Exchange after lunch.

Fire and Rain will have two 8 foot tables for vendor sales. This will be for beads ONLY.

we will split the tables in half, thus allowing four people at a time to sell BEADS and break into 2 hour sections. 9-11, 11-1, 1-3, & 3-5. This will allow the artist to be able to talk about their own beads.

Send email with time request to [events@fire-and-rain.org](mailto:events@fire-and-rain.org).

Bring your beads/donations for Beads of Courage" .

## Northwest Bead Society

### BEAD BAZAAR

The Northwest Bead Society is proud to announce their annual  
Bead Bazaar.

Saturday from 10 to 6 and Sunday from 11 to 5, Sept. 12 and 13, 2009  
at the Lynnwood Convention Center  
3711 196th Street SW  
Lynnwood, WA

for more info go to [lynnwoodcc.org](http://lynnwoodcc.org) or [nwbeadsociety.org](http://nwbeadsociety.org)

### NO STROLLERS PLEASE

Adults - \$5 Children 12 & under \$2

Free parking, demonstrations, prizes and more.

Silver, Vintage, Crystals, Ceramic, Semi-precious,  
Lampwork, Polymer Clay, and Seed Beads, Tools, Books,  
Handmade & Finished Jewelry, Collectibles, Findings and more...

- 
- o- Tacoma Art Museum, Ornament as Art, 6/6 through 9/13/09
  - o- International Gem & Jewelry Show, Seattle Center, 8/21-23/09
  - o- Museum of Glass, Preston Singletary: Echoes, Fire & Shadows, 7/11/09 through 9/19/10
  - o- Northwest Bead Society Bead Bazaar, September 12 & 13, 2009
  - o- Larry Scott Free Demonstration: October 24, 9:30am-1:30pm, Flameworking Studio at Pratt Fine Arts Center

---

**FIRE AND RAIN MEMBERSHIP SHOWCASE NECKLACE:** This is exciting. We are planning a membership showcase - in the form of a necklace - that the entire membership can contribute to. Several options to showcase the talents of F&R are being explored (Leslie is working with some museums and galleries), with the hope that we can all become more visible and exhibit to the glass and art community. We hope to have an annual membership showcase necklace that reflects the changing styles, skills, and creativity of our membership through time.

Members only can participate. The **THEME** for 2009 is the Pacific Northwest . Your contribution is a bead that reflects your style and ideas about the PNW . The largest dimensions possible are 50mm x 25mm (that's roughly 2"x1") and that's a pretty big bead - be true to yourself in your size; this is a total reflection of you and your art. The bead hole needs to be 3/32 . Colors and shapes are totally determined by you - the artist.

The **FINAL DEADLINE** to turn in your bead is at the Christmas party, December 2009 . A small descriptive can be included (and is encouraged) to accompany your contribution. We are considering highlighting each bead in the website, along with a very short descriptive, and are considering adding members pictures along with the highlighted bead. (We need to discuss the picture thing - do we need to worry about web security?). The Board will designate a designer who will transform our art into our showcase necklace.

NWBS has done projects like this in the past. You can go to their website <http://www.nwbeadsociety.org/member%20gallery.htm> and view their 2003 commemorative necklace and how they showcase the bead by the member.

Any questions: Contact Donna Galstad [events@fire-and-rain.org](mailto:events@fire-and-rain.org)

---

## Tool Review;

I had envisioned a version of this tool several years ago but moved away from bead making so didn't follow it up. I have recently 'returned to my roots' so to speak and it was much cheaper to buy one of these rather than make one. Before doing so I talked with several F&R members who use the tool and got great reports. I have only used it a short while but I find it truly useful and it does a wonderful job keeping those bead sides parallel. It is a bit large but very light weight and it operates smoothly and reliably. The optional heads extend the range of functions greatly and I suspect custom heads could be easily done as well.

From the Wale Apparatus catalogue;

TP, that's Truly Parallel! With interchangeable graphite heads, this lightweight and versatile tool makes flattening and shaping your glass a cinch. Features include a lightweight aluminum design, settable stop for exact pressing, and medium duty spring action that is easy to squeeze yet strong enough to open every time with ease.

Available heads include a flat round head, lenticular presses, small and large radials, and larger 2" square flat heads.



Wale Apparatus Co., Inc.  
400 Front Street  
Hellertown, PA 18055  
Phone: (610) 838-7047 or (800) 334-WALE  
Fax: (610) 838-7440  
[www.waleapparatus.com](http://www.waleapparatus.com)  
Cat#40-1135 ... \$98.00